



Rialtas na hÉireann  
Government of Ireland

**IGEES**

Irish Government Economic and Evaluation Service

# Is it time to rethink Ireland's economic model?

## The role of supports to the enterprise and labour markets

Adrian Hurley; Enterprise, Trade and Employment Vote Section; Department of Public Expenditure and Reform (IGEES)

Rory Geary and Dermot Coates; Department of Social Protection (IGEES)

14<sup>th</sup> September 2021



## Spending Review 2021

### An analysis of the distribution of enterprise supports

ADRIAN HURLEY

DETE VOTE

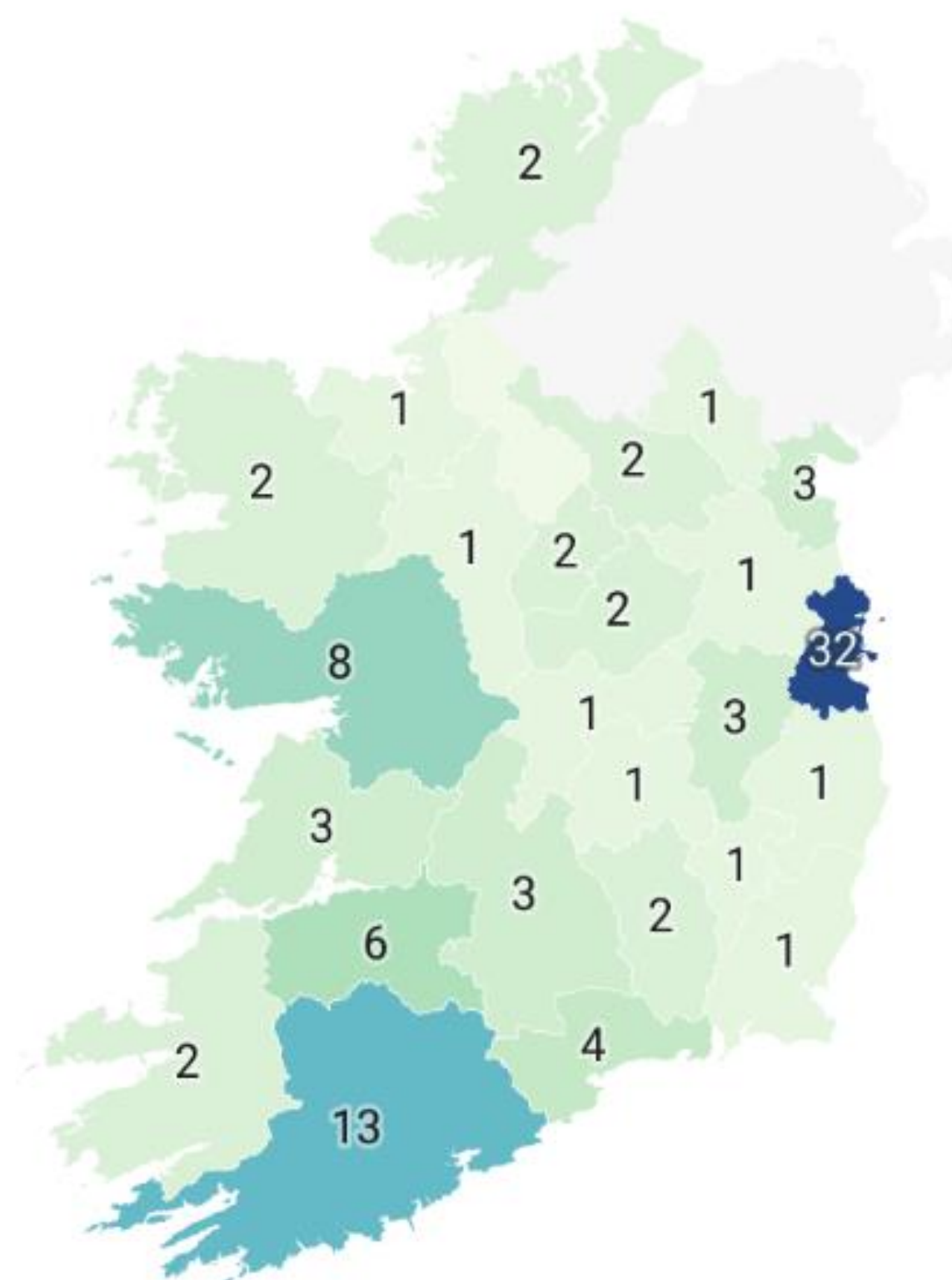
DEPARTMENT OF PUBLIC EXPENDITURE AND REFORM

2021



Enterprise Ireland (€176m)	IDA Ireland (€96m)	Local Enterprise Offices (€12m)	Other
Seed and Venture Capital Fund	RD&I Support	Priming Grant	Taxation
Entrepreneurship	Property Programme	Expansion Grant	Skills Development
Competitiveness & Capacity	Capital Grants	Feasibility Study	Labour Market Policy
Innovation	Employment Grants	Technical Assistance	Infrastructure

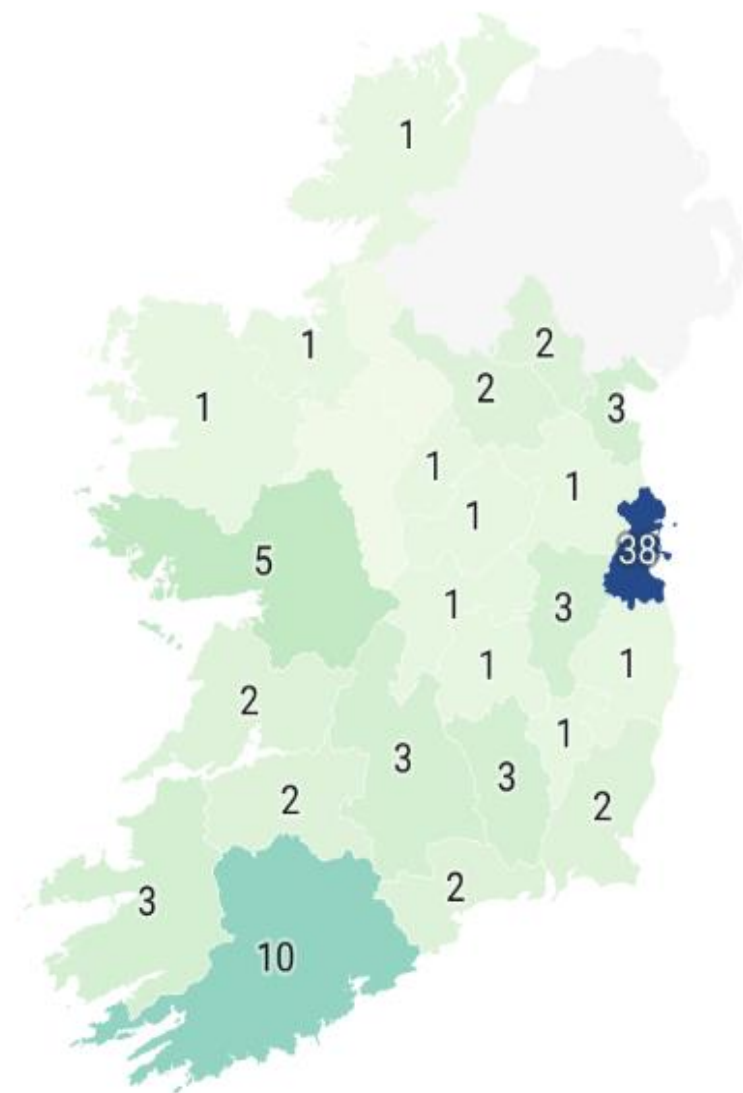
# The Regional Distribution of Supports



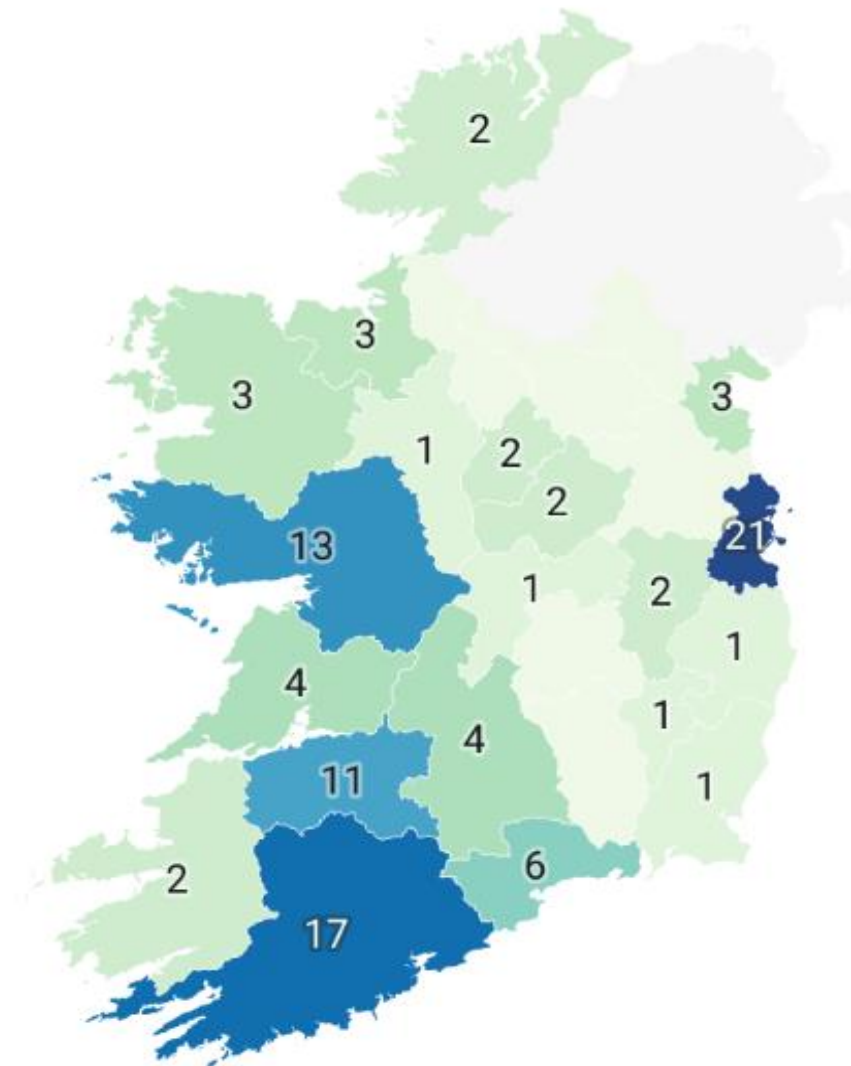
# The Regional Distribution of Supports



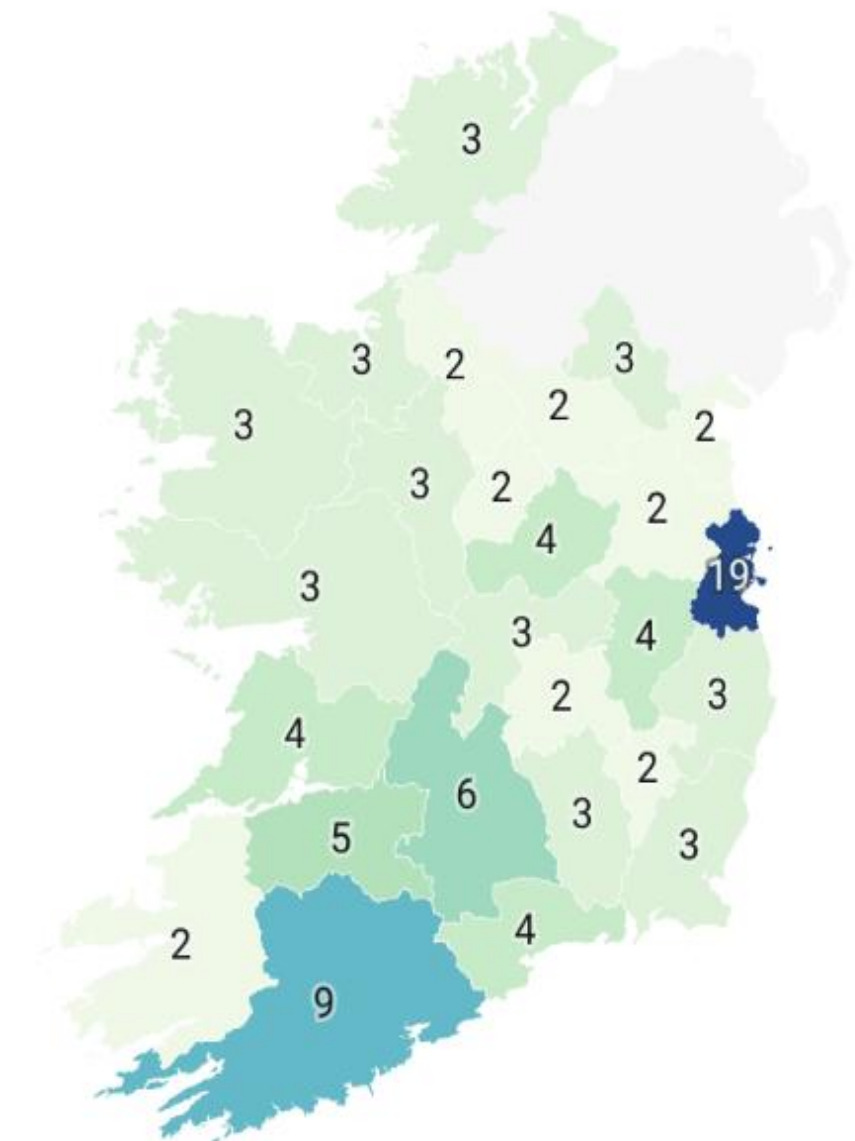
Enterprise Ireland



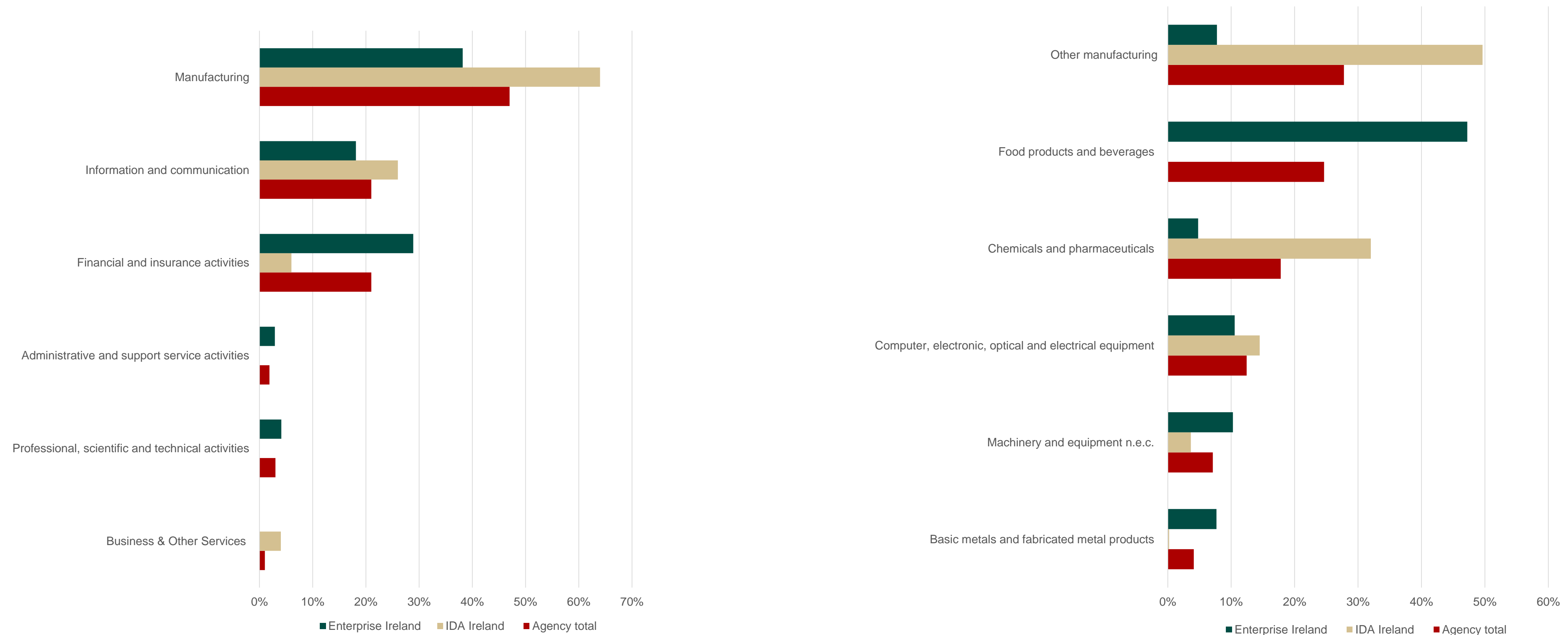
IDA Ireland



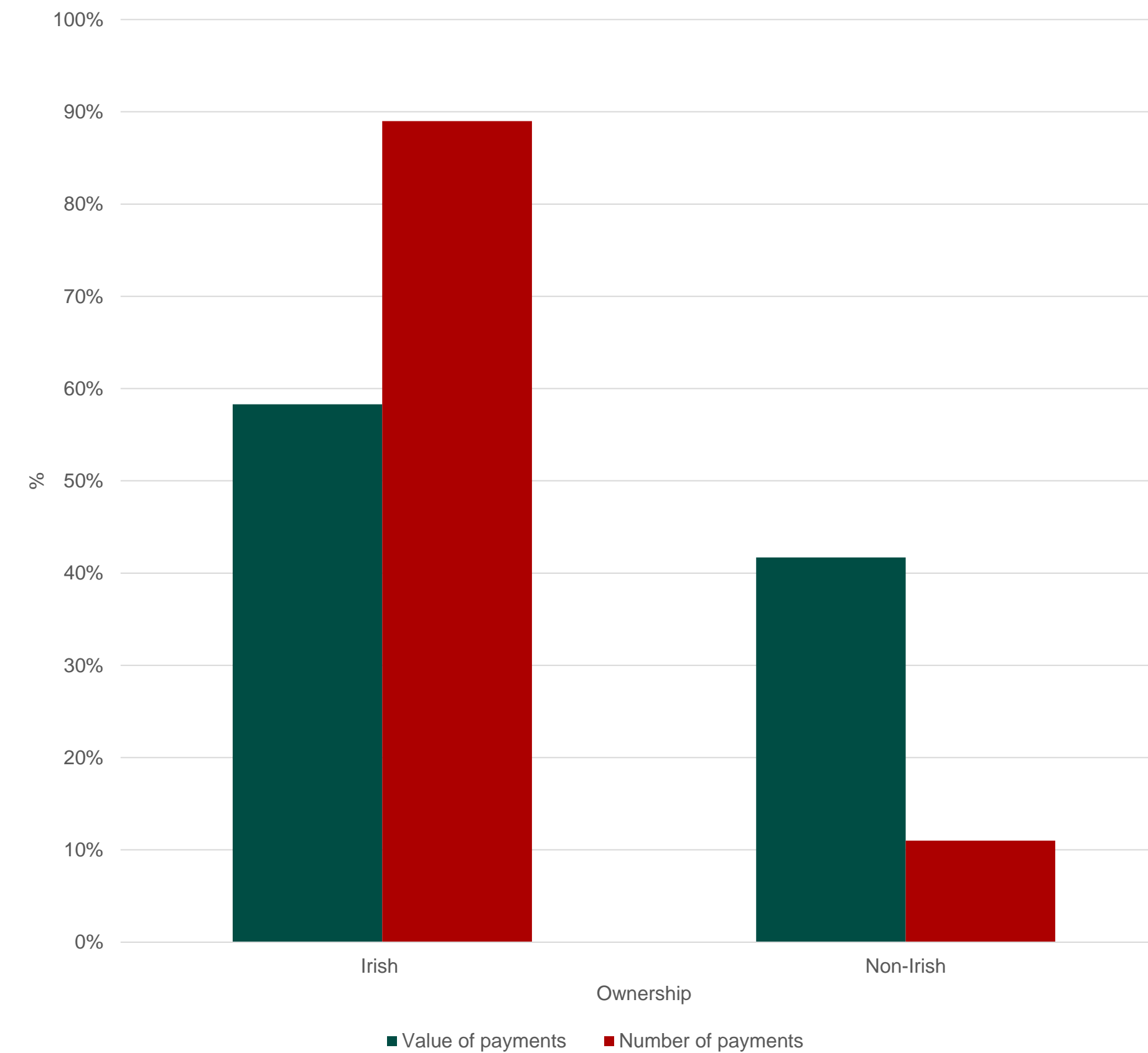
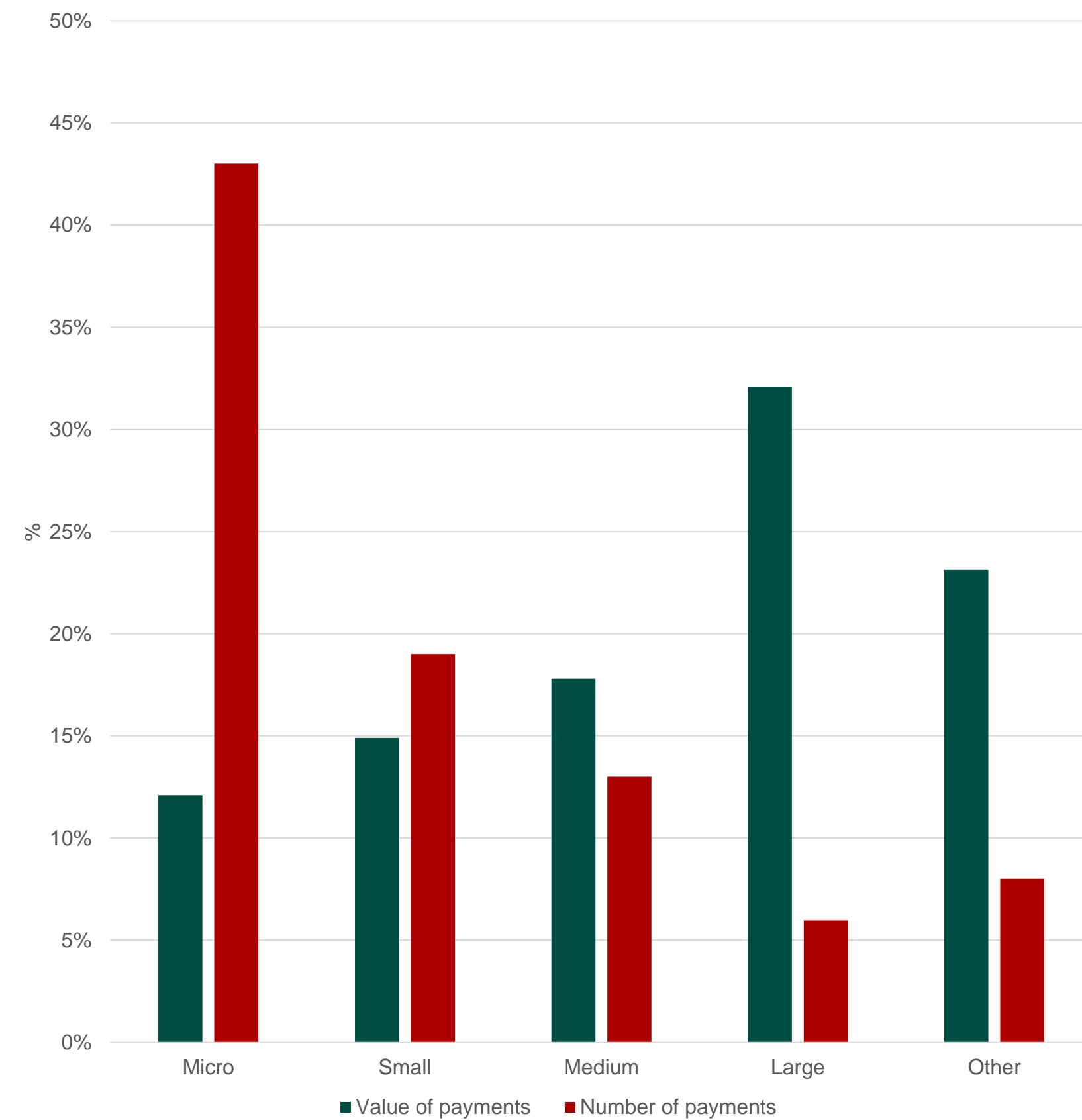
Local Enterprise Offices



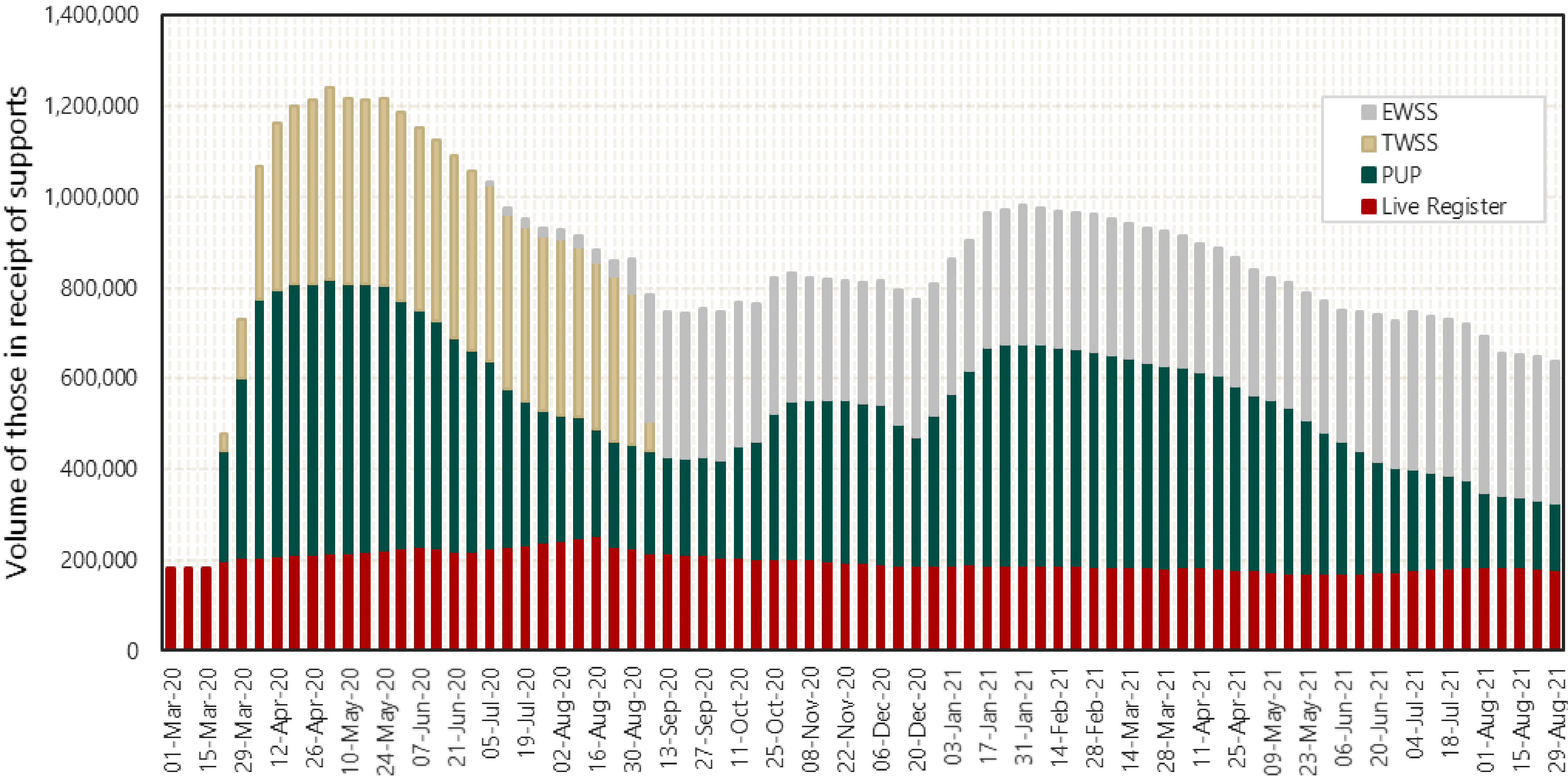
# The Sectoral Distribution of Supports



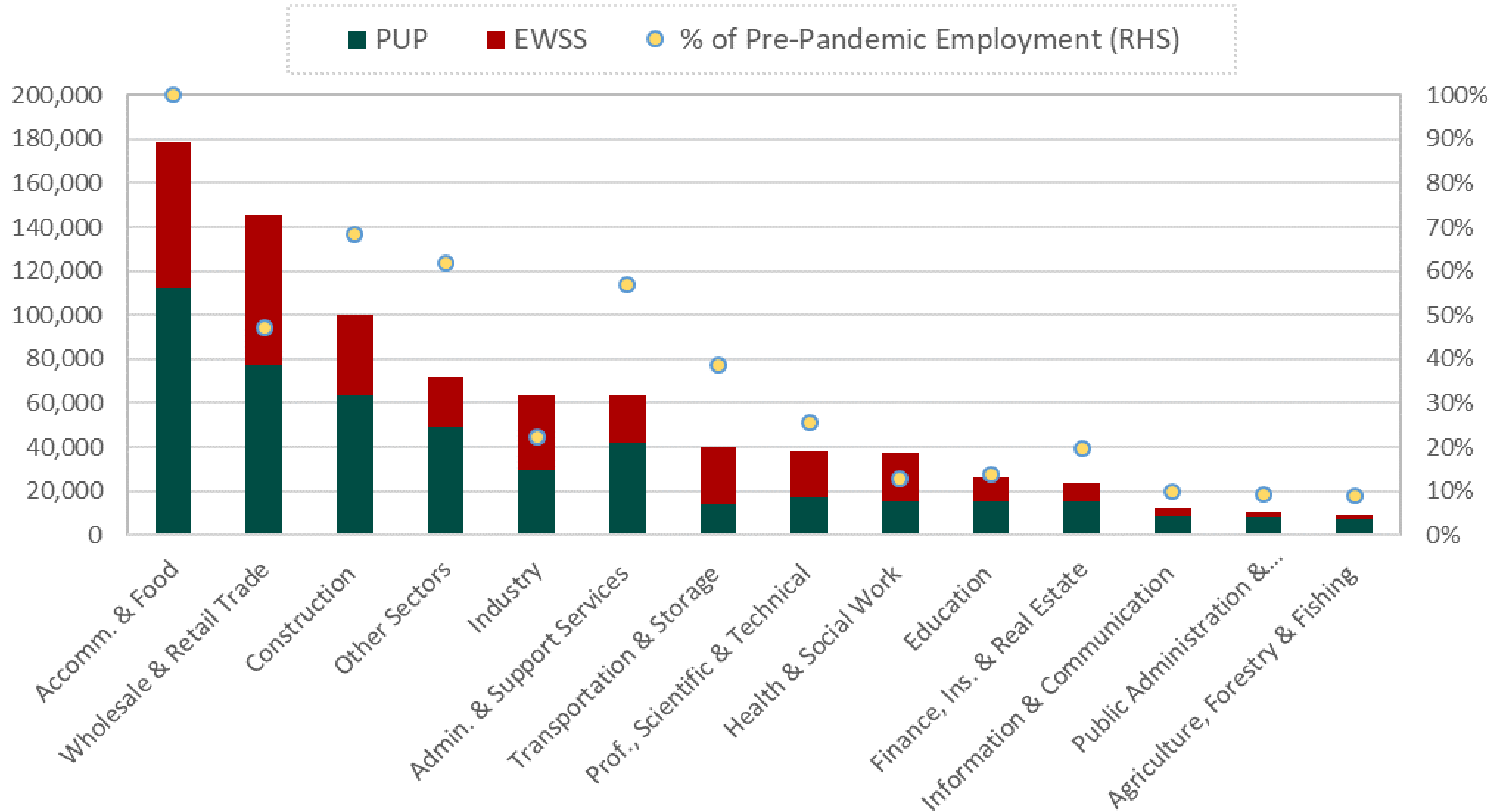
# The Firm Level Distribution of Supports



# The Evolution of Labour Market Supports

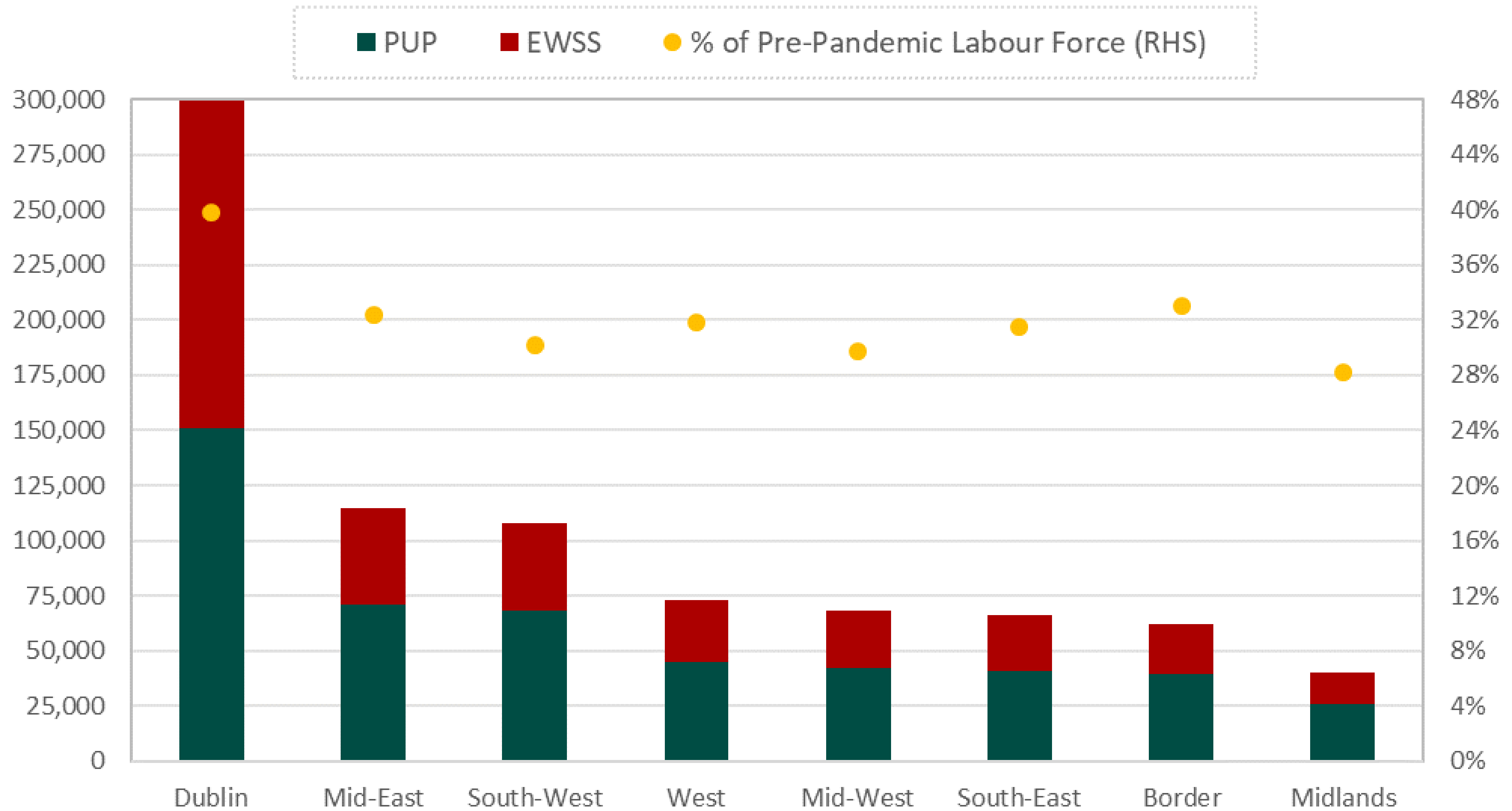


# Sectoral Distribution of PUP & EWSS at 2021 Peak





# Regional Distribution of PUP & EWSS at 2021 Peak



# Strategic Focus on the Labour Market



The Government has launched two fundamental strategies to support and strengthen the labour market:

- **Economic Recovery Plan (Pillar II: the labour market)**
- **Pathways to Work 2021 – 2025 (next iteration of the national employment strategy)**

## Key targets & measures include:

- Exceed pre-pandemic employment levels with 2.5 million people in work by 2024.
- ***Expanding the caseload capacity of the Public Employment Service*** by 100,000 jobseekers and increasing the number of Department of Social Protection Case Officers by 50 percent.
- ***Subsidies of up to €10,000 for employers who take people off the Live Register.***
- New ***Work Placement Experience Programme*** to provide ***10,000 paid placements***, 4,000 of which will be ring-fenced for young jobseekers.
- ***50,000 further and higher education training places*** to be provided.
- €1,000 Training Support Grant for jobseekers.